









IXXI

manual

included

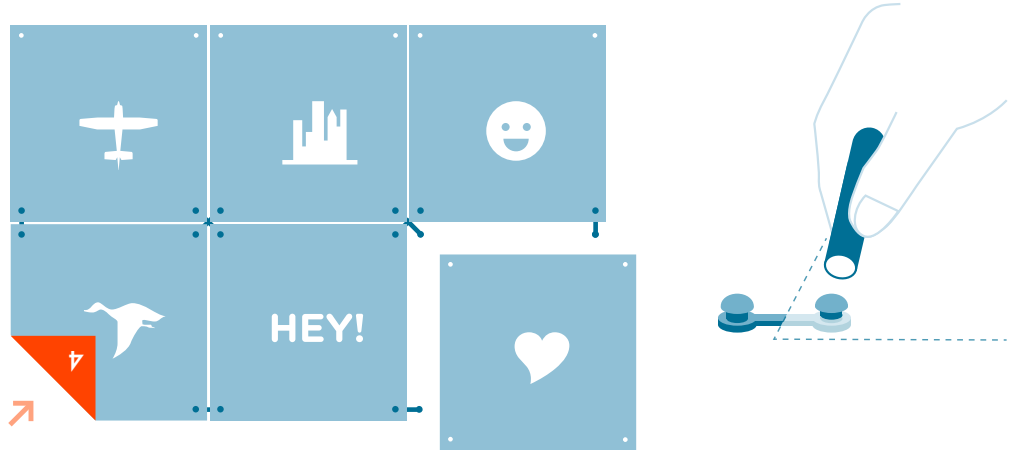
 <p>Cards</p>	 <p>Connectors - I</p>	 <p>Connectors - X</p>	 <p>Monos</p>
 <p>Hanging strip</p>	 <p>Tesa Powerstrips for single use</p>	 <p>Drawing pins</p>	 <p>Click stick</p>

IMPORTANT

- Powerstrips adhere to a smooth, clean, hard and nonporous surface*.
- Use the drawing pins (see step 3).
- Want to remove the IXXI strip? Please carefully read the last page.

* Do you have a different surface? Please take a look at the [FAQ](#) on our website.

1

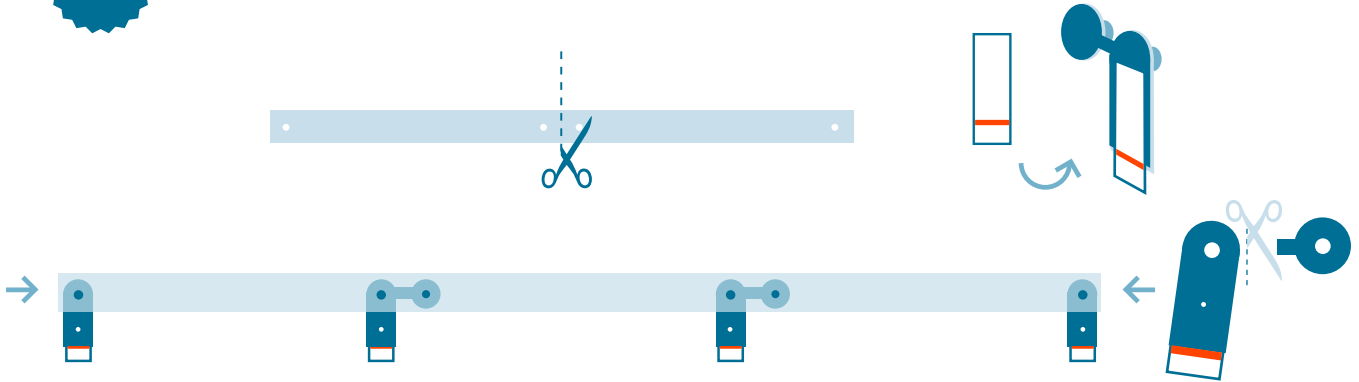


Lay down the cards on a flat surface with the image upwards, according to the provided overview of your IXXI.

Connect the cards with the X's and I's. If required, use provided click stick to prevent any damage.

In the upper row of cards, do not use the I connectors. These cards will be connected to the hanging strip later on in step 4 and therefore.

2

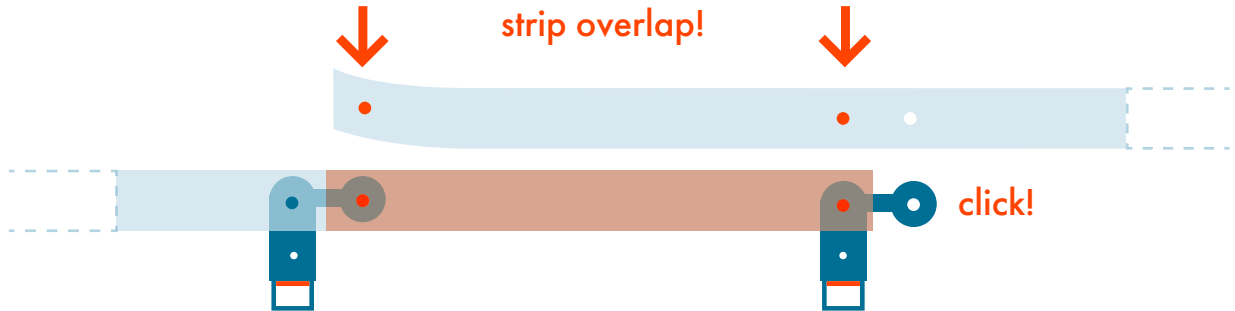


Cut the strip to the width of your IXXI. Attach the Power- strips to the backside of the Monos, and click it into the strip.

Make sure that the plastic tab with the red stripe of the Powerstrip ends up under the Mono.

Cut 2 Monos, and attach the long parts in the ends of the strip. The other parts of the Mono are used in step 4.

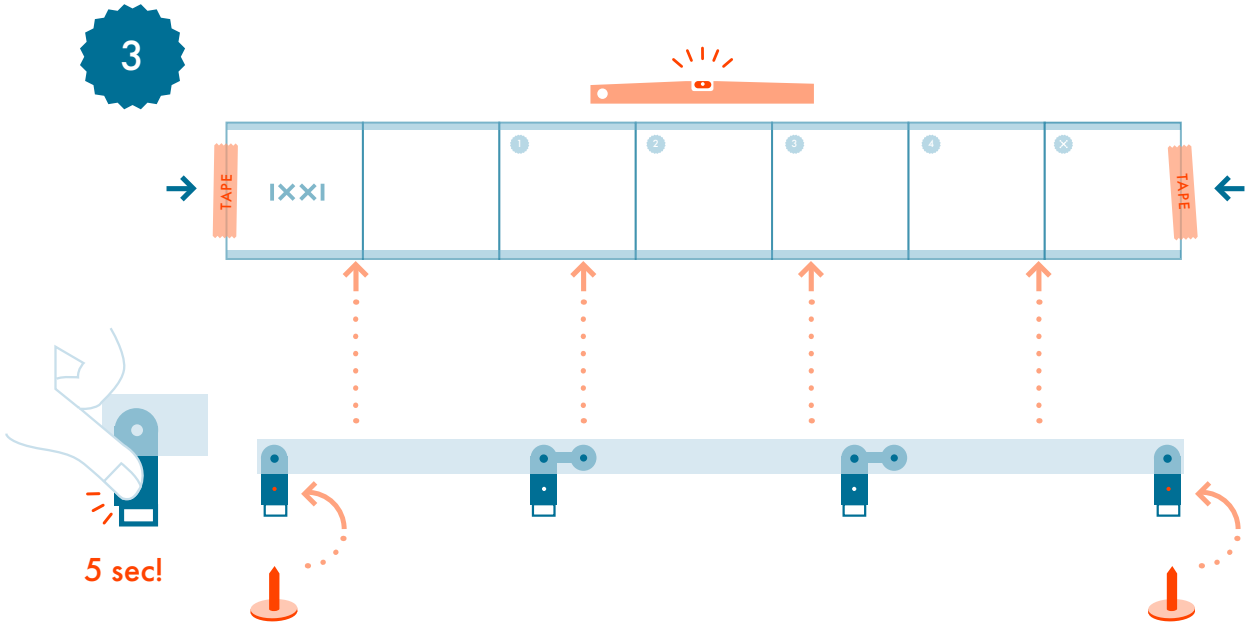
>140cm



Is your IXXI more than 140 cm (55 inch) in width?

Then click the provided hanging strips to each other with a Mono.

3

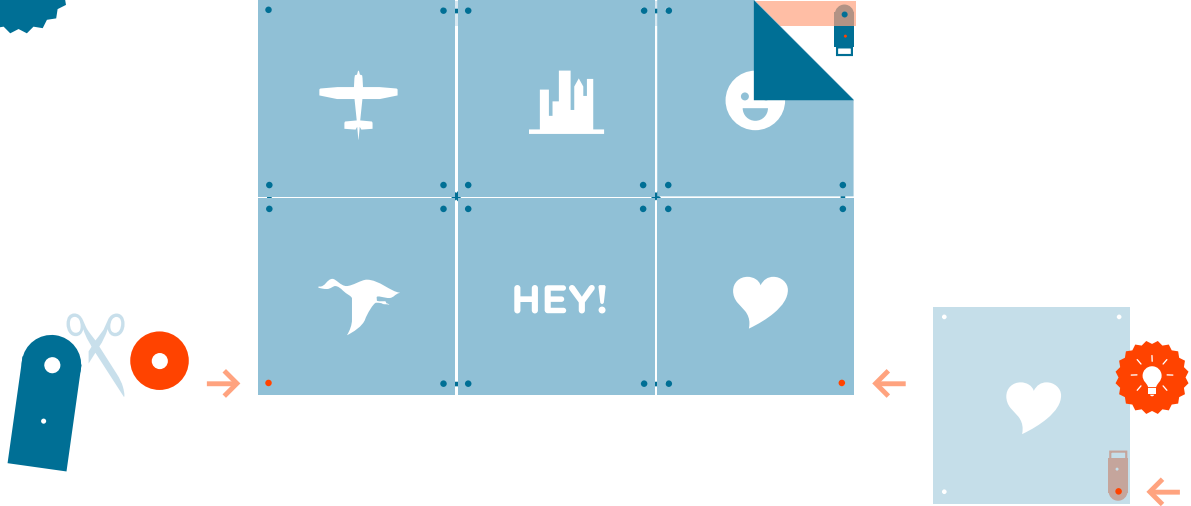


Attach this manual (help for hanging) to the wall with tape, level and dead straight, on the spot where you want to hang the IXXI.

Stick the hanging strip exactly under the help for hanging to the wall. Press the Powerstrips for 5 seconds.

Secure the Monos left and right (and in the middle if needed) with the provided drawing pins

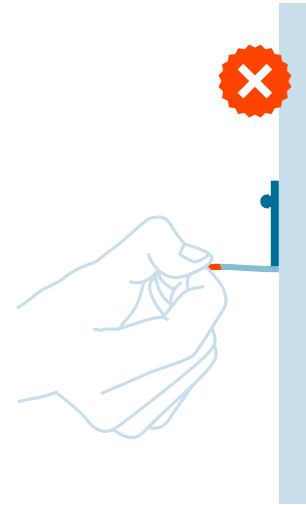
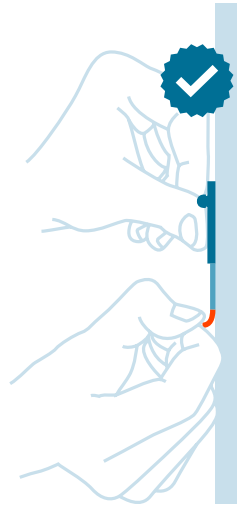
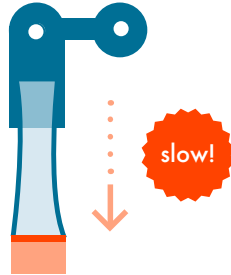
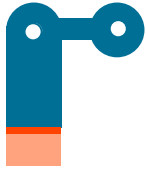
4



Click the IXXI on the strip. Click the remaining parts of the Mono in the bottom left and right corner.

Your IXXI hangs!

You can also fasten your IXXI at the bottom. This is particularly recommended for large IXXIs. Use the long part of the Mono in the bottom left and right corner, and fasten it with a Powerstrip.



Detach IXXI

Beneath the Mono, a piece of the Tesa powerstrip is visible. The Mono will come loose by gently pulling on this piece of the Powerstrip.

The Powerstrip sticks to the topcoat (e.g. plaster) of your wall. Be mindful to detach the Powerstrip with utmost care by slowly pulling it in a downwards direction. Keep the Powerstrip parallel to the wall instead of pulling it towards you. Use your other hand to keep the Mono in place.